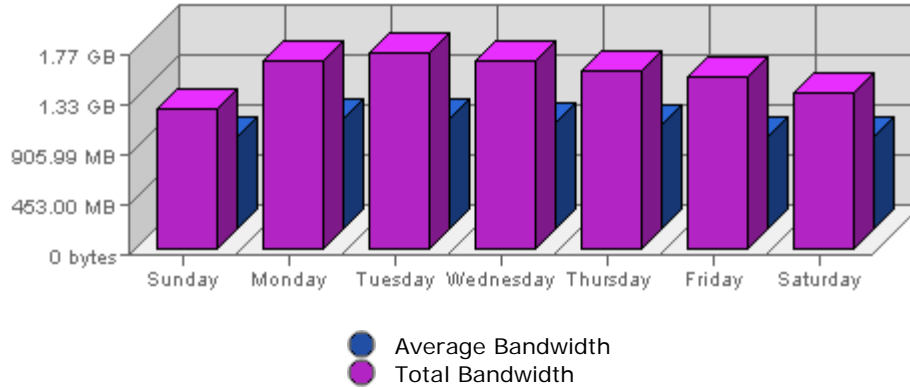


Executive Report
 For the week of August 21st 2005
 For virtual server **LesTwarog**

Bandwidth



Date	Bandwidth	Average	Forecast	% of Total
Sun Aug 21st, 2005	1.24 GB	848.82 MB	n/a ▬	11.46
Mon Aug 22nd, 2005	1.67 GB	1011.43 MB	n/a ▲	15.44
Tue Aug 23rd, 2005	1.74 GB	1007.36 MB	n/a ▲	16.05
Wed Aug 24th, 2005	1.67 GB	967.46 MB	n/a ▼	15.46
Thu Aug 25th, 2005	1.58 GB	953.81 MB	n/a ▼	14.62
Fri Aug 26th, 2005	1.52 GB	834.62 MB	n/a ▲	14.09
Sat Aug 27th, 2005	1.39 GB	850.54 MB	n/a ▲	12.88

Summary:

The total amount of bandwidth transferred during the selected week is **10.82 GB**.

The average amount of bandwidth transferred during a week is **2.82 GB**.

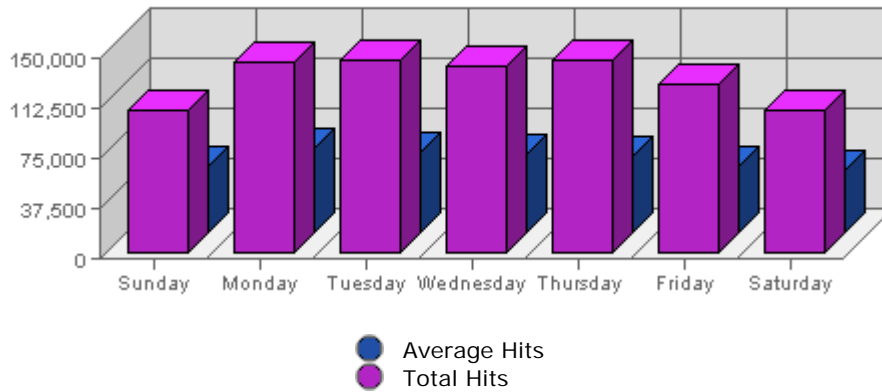
The smallest amount of bandwidth transferred occurred on **Sun, Aug 21st 2005** with **1.24 GB** transferred.

The largest amount of bandwidth transferred occurred on **Tue, Aug 23rd 2005** with **1.74 GB** transferred.

On average the smallest amount of bandwidth transferred occurs on **Friday** with **533.07 MB** transferred.

On average the largest amount of bandwidth transferred occurs on **Tuesday** with **648.83 MB** transferred.

Hits



Date	Hits	Average	Forecast	% of Total
Sun Aug 21st, 2005	106,745	49,916.60	n/a ▾	11.67
Mon Aug 22nd, 2005	143,449	63,159.26	n/a ▲	15.68
Tue Aug 23rd, 2005	144,133	60,770.80	n/a ▲	15.76
Wed Aug 24th, 2005	140,763	59,128.62	n/a ▼	15.39
Thu Aug 25th, 2005	145,099	58,195.81	n/a ▼	15.86
Fri Aug 26th, 2005	127,219	50,962.81	n/a ▲	13.91
Sat Aug 27th, 2005	107,236	47,768.65	n/a ▼	11.72

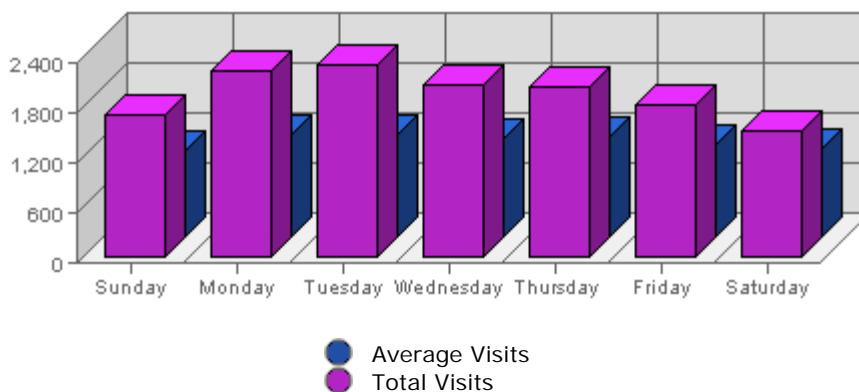
Summary:

The total number of hits during the selected week is **914,644**.
The average number of hits during a week is **275,811.67**.

The smallest number of hits occurred on **Sun, Aug 21st 2005** with **106,745** hits.
The largest number of hits occurred on **Thu, Aug 25th 2005** with **145,099** hits.

On average the smallest number of hits occurs on **Saturday** with **48,381.71** hits.
On average the largest number of hits occurs on **Monday** with **63,978.54** hits.

Visits



Date	Visits	Average	Forecast	% of Total
Sun Aug 21st, 2005	1,725	1,054.41	n/a ▾	12.52
Mon Aug 22nd, 2005	2,235	1,226.08	n/a ▲	16.22
Tue Aug 23rd, 2005	2,318	1,226.41	n/a ▲	16.82
Wed Aug 24th, 2005	2,077	1,196.14	n/a ▼	15.07
Thu Aug 25th, 2005	2,063	1,201.28	n/a ▼	14.97

Fri Aug 26th, 2005	1,836	1,114.74	n/a ▼	13.32
Sat Aug 27th, 2005	1,529	1,061.09	n/a ▼	11.09

Summary:

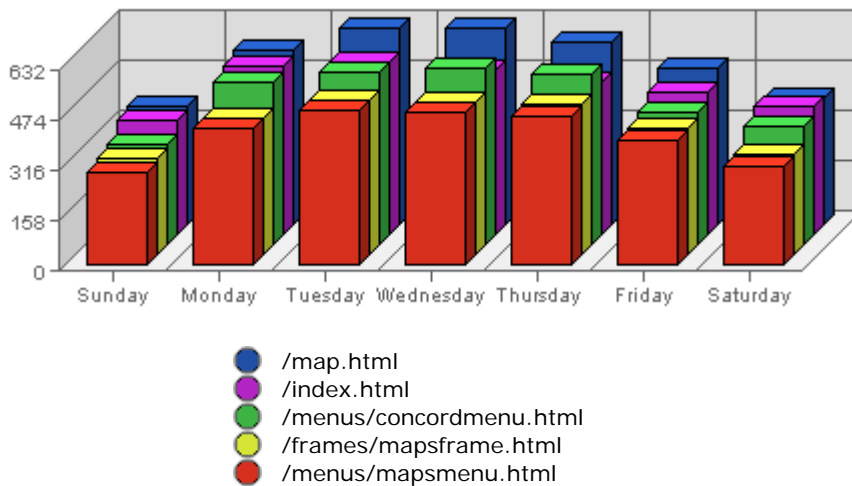
The total number of visits during the selected week is **13,783**.
The average number of visits during a week is **5,715.28**.

The smallest number of visits occurred on **Sat, Aug 27th 2005** with **1,529** visits.
The largest number of visits occurred on **Tue, Aug 23rd 2005** with **2,318** visits.

On average the smallest number of visits occurs on **Sunday** with **1,051.97** visits.
On average the largest number of visits occurs on **Tuesday** with **1,237.43** visits.

Most Common Downloads

No Data Available for selected period

Most Common Page Views

	URL	Hits	Average	Forecasted	% of Total
1.	/map.html	3,655	642.37	n/a ▲	4.01%
2.	/index.html	3,313	1,725.55	n/a ▲	3.63%
3.	/menus/concordmenu.html	3,281	1,276.86	n/a ▲	3.60%
4.	/frames/mapsframe.html	2,908	569.59	n/a ▲	3.19%
5.	/menus/mapsmenu.html	2,867	564.04	n/a ▲	3.14%
6.	/maps/concordpacific/index.html	2,675	1,010.39	n/a ▲	2.93%
7.	/frames/concordframe.html	2,291	809.07	n/a ▲	2.51%
8.	/maps/coalharbour/index.html	1,307	526.92	n/a ▲	1.43%
9.	/maps/detail.asp	1,200	360.28	n/a ▲	1.32%
10.	/menus/coalmenu.html	1,156	420.38	n/a ▲	1.27%

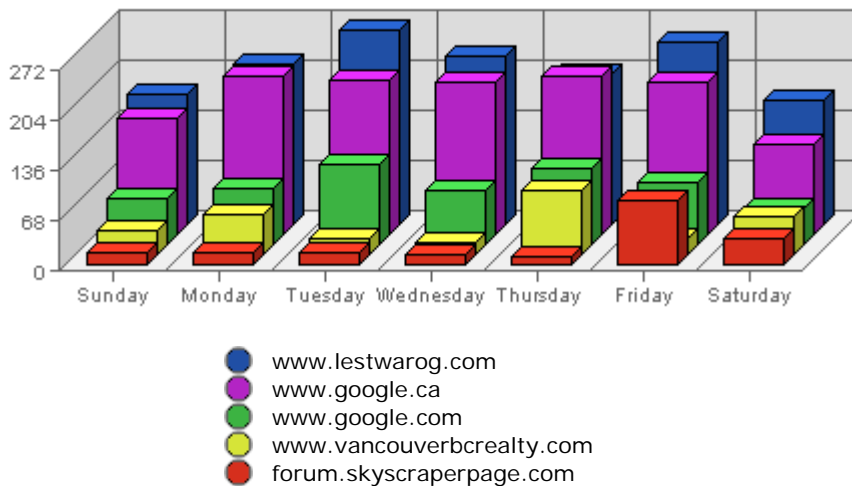
Summary:

- During the selected week, **6,582** distinct pages are responsible for **91,171** page views. (Averaging **13.85** views per page)
- During the previous week, **5,881** distinct pages were responsible for **77,191** page views.

(Averaging **13.13** views per page)

- During the selected week there are **6,582** distinct pages.
During the previous week there were **5,881** distinct pages.
This is a change of **701 (+11.92%)** distinct pages.
- During the selected week there are **91,171** page views.
During the previous week there were **77,191** page views.
This is a change of **13,980 (+18.11%)** page views.
- The selected week's average (**13.85** views per page) is **up** by **0.72 (+5.48%)** from last week's average (**13.13** views per page).
- **14.34%** of all pages were viewed more than the average (**13.85** views per page), and **85.66%** were viewed less.
- Your top page accounts for **3,655** page views, **4.01%** of all page views.
- **2,278** pages (**34.61%** of all pages) recorded only 1 page view.

Most Common Referring Sites



Referring Site	Referrals	Average	Forecasted	% of Total
1. www.lestwarog.com	1,518	331.81	n/a ▲	28.29%
2. www.google.ca	1,346	182.64	n/a ▲	25.08%
3. www.google.com	568	70.30	n/a ▲	10.59%
4. www.vancouverbcrealty.com	290	127.68	n/a ▲	5.40%
5. forum.skyscraperpage.com	208	28.35	n/a ▼	3.88%
6. www.6717000.com	168	109.55	n/a ▼	3.13%
7. search.yahoo.com	153	56.68	n/a ▲	2.85%
8. ca.search.yahoo.com	149	35.47	n/a ▲	2.78%
9. 6717000.com	110	8.16	n/a ▲	2.05%
10. post.baidu.com	92	2.24	n/a ▲	1.71%

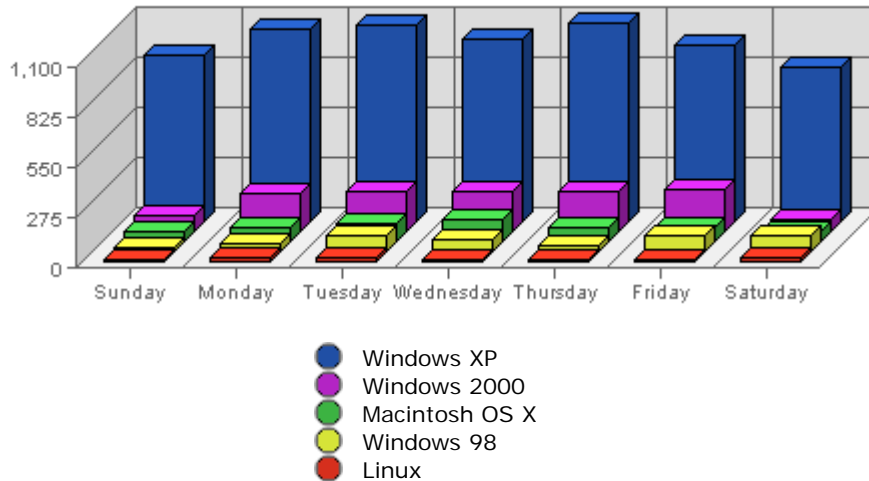
Summary:

- During the selected week, **210** distinct referrers are responsible for **5,366** visits.
(Averaging **25.55** visits per referrer)
- During the previous week, **188** distinct referrers were responsible for **4,555** visits.
(Averaging **24.23** visits per referrer)
- During the selected week there are **210** distinct referrers.
During the previous week there were **188** distinct referrers.
This is a change of **22 (+11.70%)** distinct referrers.
- During the selected week there are **5,366** referred visits.

During the previous week there were **4,555** referred visits.
This is a change of **811 (+17.80%)** visits.

- The selected week's average (**25.55** visits per referring site) is **up** by **1.32 (+5.45%)** from last week's average (**24.23** visits per referring site).
- **7.14%** of all referrers provided more visits than the average (**25.55** visits per referrer), and **92.86%** provided less.
- Your top referrer accounts for **1,518** referred visits, **28.29%** of all referred visits.
- **110** referrers (**52.38%** of all referrers) referred only 1 visit.

Most Common Browser Operating Systems



	Operating System	Visits	Average	Forecasted	% of Total
1.	Windows XP	6,988	2,233.75	n/a ▲	70.75%
2.	Windows 2000	1,286	582.36	n/a ▲	13.02%
3.	Macintosh OS X	584	112.24	n/a ▲	5.91%
4.	Windows 98	461	363.73	n/a ▲	4.67%
5.	Linux	156	50.61	n/a ▲	1.58%
6.	Windows ME	132	125.47	n/a ▲	1.34%
7.	Macintosh PPC	122	62.28	n/a ▲	1.24%
8.	Windows 95	59	31.51	n/a ▲	0.60%
9.	Windows 2003	48	14.13	n/a ▼	0.49%
10.	Windows NT	36	38.14	n/a ▲	0.36%

Summary:

- During the selected week, **14** distinct browser operating systems are seen in **9,877** visits.
(Averaging **705.50** visits per browser operating system)
- During the previous week, **12** distinct browser operating systems were seen in **8,408** visits.
(Averaging **700.67** visits per browser operating system)
- During the selected week there are visits from **14** distinct browser operating systems.
During the previous week there were visits from **12** distinct browser operating systems.
This is a change of **2 (+16.67%)** distinct browser operating systems.
- During the selected week there are **9,877** visits with identifiable browser operating systems.
During the previous week there were **8,408** visits with identifiable browser operating systems.
This is a change of **1,469 (+17.47%)** visits.
- The selected week's average (**705.50** visits per browser operating system) is **up** by **4.83 (+0.69%)** from last week's average (**700.67** visits per browser operating system).
- **14.29%** of all browser operating systems are present in more than the average (**705.50** visits per

browser operating system), and **85.71%** are present in less.

- Your top browser operating system accounts for **6,988** visits, **70.75%** of all visits.
- **3** browser operating systems (**21.43%** of all browser operating systems) recorded only 1 visit.