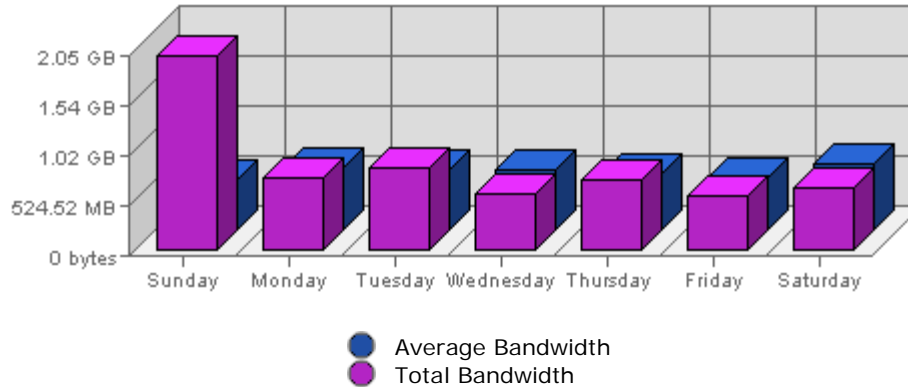


Bandwidth



Date	Bandwidth	Average	Forecast	% of Total
Sun Dec 12th, 2004	2.00 GB	543.76 MB	n/a ▲	32.58
Mon Dec 13th, 2004	771.87 MB	657.50 MB	n/a ▲	12.31
Tue Dec 14th, 2004	860.89 MB	638.71 MB	n/a ▲	13.73
Wed Dec 15th, 2004	606.91 MB	642.89 MB	n/a ▼	9.68
Thu Dec 16th, 2004	739.27 MB	603.61 MB	n/a ▲	11.79
Fri Dec 17th, 2004	582.27 MB	559.01 MB	n/a ▼	9.29
Sat Dec 18th, 2004	666.58 MB	694.34 MB	n/a ▼	10.63

Summary:

The total amount of bandwidth transferred during the selected week is **6.12 GB**.

The average amount of bandwidth transferred during a week is **1.07 GB**.

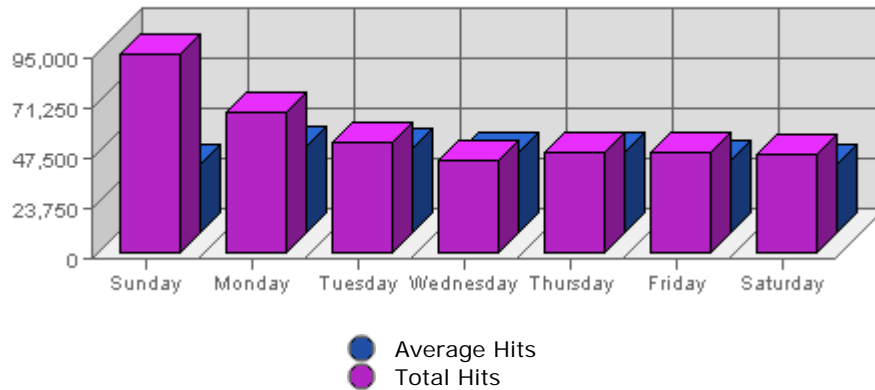
The smallest amount of bandwidth transferred occurred on **Fri, Dec 17th 2004** with **582.27 MB** transferred.

The largest amount of bandwidth transferred occurred on **Sun, Dec 12th 2004** with **2.00 GB** transferred.

On average the smallest amount of bandwidth transferred occurs on **Friday** with **236.20 MB** transferred.

On average the largest amount of bandwidth transferred occurs on **Saturday** with **301.93 MB** transferred.

Hits



Date	Hits	Average	Forecast	% of Total
Sun Dec 12th, 2004	94,251	32,948.97	n/a ▲	23.51
Mon Dec 13th, 2004	66,886	41,642.31	n/a ▲	16.68
Tue Dec 14th, 2004	52,830	40,435.21	n/a ▲	13.18
Wed Dec 15th, 2004	43,995	38,711.27	n/a ▼	10.97
Thu Dec 16th, 2004	48,297	38,780.56	n/a ▲	12.05
Fri Dec 17th, 2004	47,665	34,668.41	n/a ▼	11.89
Sat Dec 18th, 2004	47,020	32,999.46	n/a ▲	11.73

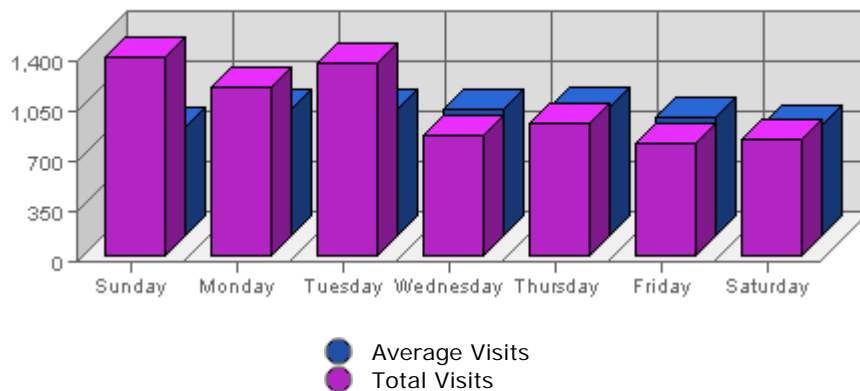
Summary:

The total number of hits during the selected week is **400,944**.
 The average number of hits during a week is **157,816.99**.

The smallest number of hits occurred on **Wed, Dec 15th 2004** with **43,995** hits.
 The largest number of hits occurred on **Sun, Dec 12th 2004** with **94,251** hits.

On average the smallest number of hits occurs on **Saturday** with **33,225.60** hits.
 On average the largest number of hits occurs on **Monday** with **42,049.47** hits.

Visits



Date	Visits	Average	Forecast	% of Total
Sun Dec 12th, 2004	1,399	768.44	n/a ▲	19.10
Mon Dec 13th, 2004	1,182	893.23	n/a ▲	16.14
Tue Dec 14th, 2004	1,351	887.90	n/a ▲	18.44
Wed Dec 15th, 2004	840	887.40	n/a ▼	11.47
Thu Dec 16th, 2004	936	901.56	n/a ▼	12.78
Fri Dec 17th, 2004	794	830.40	n/a ▼	10.84
Sat Dec 18th, 2004	823	781.75	n/a ▼	11.24

Summary:

The total number of visits during the selected week is **7,325**.

The average number of visits during a week is **3,609.97**.

The smallest number of visits occurred on **Fri, Dec 17th 2004** with **794** visits.

The largest number of visits occurred on **Sun, Dec 12th 2004** with **1,399** visits.

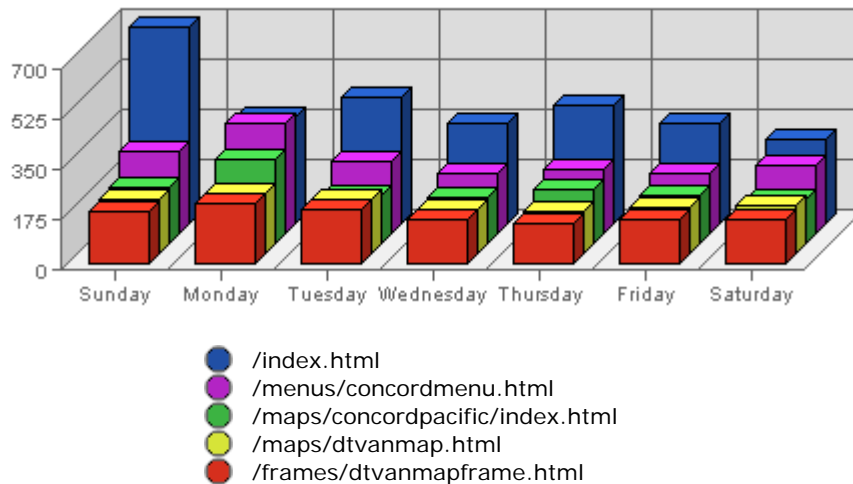
On average the smallest number of visits occurs on **Sunday** with **767.17** visits.

On average the largest number of visits occurs on **Thursday** with **902.11** visits.

Most Common Downloads

No Data Available for selected period

Most Common Page Views



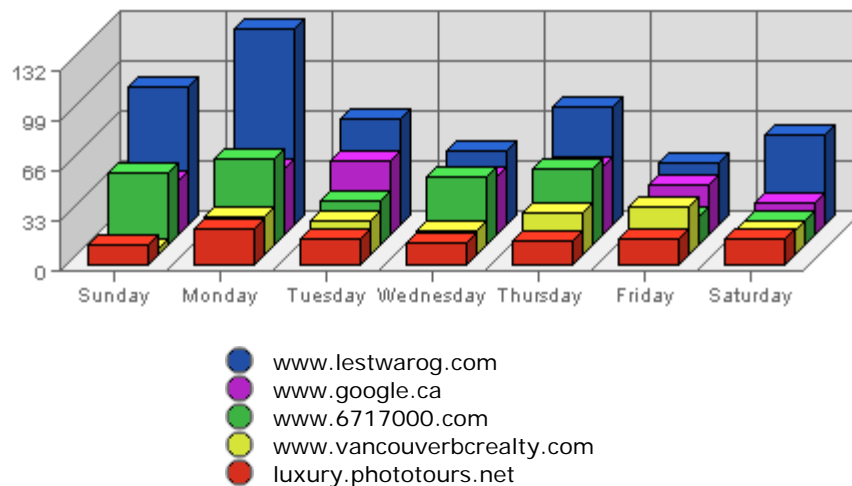
URL	Hits	Average	Forecasted	% of Total
1. /index.html	2,933	1,316.27	n/a ▲	5.31%
2. /menus/concordmenu.html	1,832	837.65	n/a ▲	3.32%
3. /maps/concordpacific/index.html	1,357	678.37	n/a ▲	2.46%

4.	/maps/dtvanmap.html	1,236	573.19	n/a ▼	2.24%
5.	/frames/dtvanmapframe.html	1,214	566.84	n/a ▼	2.20%
6.	/maps/detail.asp	1,123	138.15	n/a ▲	2.04%
7.	/frames/concordframe.html	1,083	498.73	n/a ▲	1.96%
8.	/maps/coalharbour/index.html	687	371.12	n/a ▲	1.24%
9.	/forsale.html	559	238.62	n/a ▲	1.01%
10.	/frames/forsale.html	557	238.05	n/a ▲	1.01%

Summary:

- During the selected week, **9,074** distinct pages are responsible for **55,185** page views. (Averaging **6.08** views per page)
- During the previous week, **4,446** distinct pages were responsible for **42,140** page views. (Averaging **9.48** views per page)
- During the selected week there are **9,074** distinct pages. During the previous week there were **4,446** distinct pages. This is a change of **4,628 (+104.09%)** distinct pages.
- During the selected week there are **55,185** page views. During the previous week there were **42,140** page views. This is a change of **13,045 (+30.96%)** page views.
- The selected week's average (**6.08** views per page) is **down** by **3.40 (-35.87%)** from last week's average (**9.48** views per page).
- **11.79%** of all pages were viewed more than the average (**6.08** views per page), and **88.21%** were viewed less.
- Your top page accounts for **2,933** page views, **5.31%** of all page views.
- **4,861** pages (**53.57%** of all pages) recorded only 1 page view.

Most Common Referring Sites



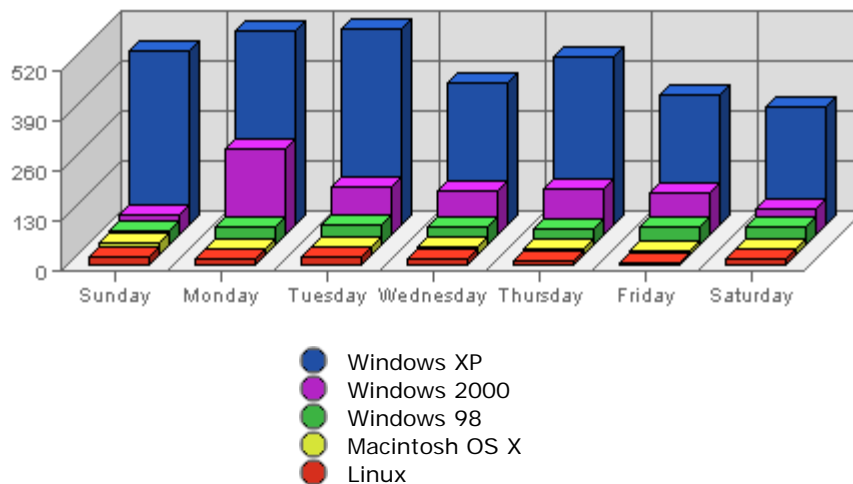
	Referring Site	Referrals	Average	Forecasted	% of Total
1.	www.lestwarog.com	523	139.23	n/a ▼	22.10%
2.	www.google.ca	270	67.34	n/a ▼	11.41%
3.	www.6717000.com	266	68.71	n/a ▼	11.24%

4.	www.vancouverbcrealty.com	148	74.49	n/a ▼	6.25%
5.	luxury.phototours.net	124	18.90	n/a ▼	5.24%
6.	www.google.com	108	29.08	n/a ▲	4.56%
7.	www.skyscrapercity.com	103	5.19	n/a ▼	4.35%
8.	search.yahoo.com	80	32.14	n/a ▲	3.38%
9.	www.vanwhitenoise.com	65	0.63	n/a ▼	2.75%
10.	www.skyscraperpage.com	40	21.77	n/a ▼	1.69%

Summary:

- During the selected week, **145** distinct referrers are responsible for **2,367** visits. (Averaging **16.32** visits per referrer)
- During the previous week, **148** distinct referrers were responsible for **2,631** visits. (Averaging **17.78** visits per referrer)
- During the selected week there are **145** distinct referrers. During the previous week there were **148** distinct referrers. This is a change of **-3 (-2.03%)** distinct referrers.
- During the selected week there are **2,367** referred visits. During the previous week there were **2,631** referred visits. This is a change of **-264 (-10.03%)** visits.
- The selected week's average (**16.32** visits per referring site) is **down** by **1.46 (-8.21%)** from last week's average (**17.78** visits per referring site).
- **14.48%** of all referrers provided more visits than the average (**16.32** visits per referrer), and **85.52%** provided less.
- Your top referrer accounts for **523** referred visits, **22.10%** of all referred visits.
- **68** referrers (**46.90%** of all referrers) referred only 1 visit.

Most Common Browser Operating Systems



	Operating System	Visits	Average	Forecasted	% of Total
1.	Windows XP	2,935	1,404.02	n/a ▼	63.75%
2.	Windows 2000	833	430.13	n/a ▲	18.09%
3.	Windows 98	328	342.12	n/a ▼	7.12%

4.	Macintosh OS X	140	47.66	n/a ▲	3.04%
5.	Linux	121	42.86	n/a ▲	2.63%
6.	Windows ME	85	118.51	n/a ▼	1.85%
7.	Macintosh PPC	76	49.42	n/a ▲	1.65%
8.	Windows NT	50	38.38	n/a ▲	1.09%
9.	Windows 95	14	23.72	n/a ▼	0.30%
10.	Windows 2003	14	5.54	n/a ▼	0.30%

Summary:

- During the selected week, **14** distinct browser operating systems are seen in **4,604** visits.
(Averaging **328.86** visits per browser operating system)
- During the previous week, **11** distinct browser operating systems were seen in **4,877** visits.
(Averaging **443.36** visits per browser operating system)
- During the selected week there are visits from **14** distinct browser operating systems.
During the previous week there were visits from **11** distinct browser operating systems.
This is a change of **3 (+27.27%)** distinct browser operating systems.
- During the selected week there are **4,604** visits with identifiable browser operating systems.
During the previous week there were **4,877** visits with identifiable browser operating systems.
This is a change of **-273 (-5.60%)** visits.
- The selected week's average (**328.86** visits per browser operating system) is **down** by **114.50 (-25.83%)** from last week's average (**443.36** visits per browser operating system).
- **14.29%** of all browser operating systems are present in more than the average (**328.86** visits per browser operating system), and **85.71%** are present in less.
- Your top browser operating system accounts for **2,935** visits, **63.75%** of all visits.
- **3** browser operating systems (**21.43%** of all browser operating systems) recorded only 1 visit.