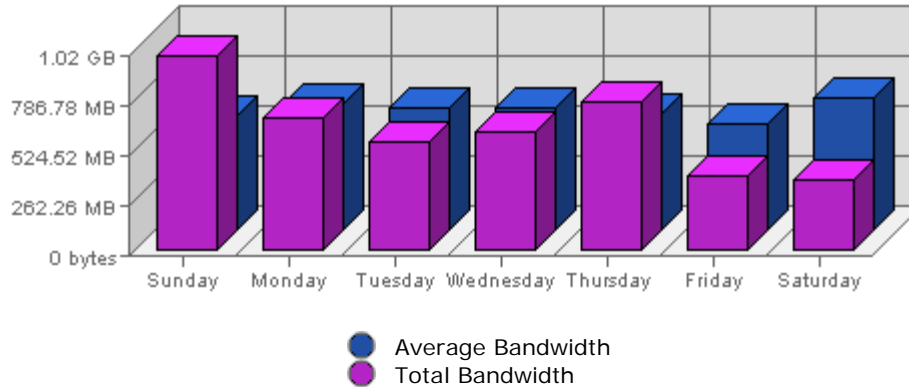


Executive Report
 For the week of December 19th 2004
 For virtual server **LesTwarog**

Bandwidth



Date	Bandwidth	Average	Forecast	% of Total
Sun Dec 19th, 2004	1018.50 MB	601.43 MB	n/a ▼	22.86
Mon Dec 20th, 2004	698.52 MB	661.90 MB	n/a ▼	15.68
Tue Dec 21st, 2004	569.99 MB	646.94 MB	n/a ▼	12.80
Wed Dec 22nd, 2004	619.93 MB	641.55 MB	n/a ▲	13.92
Thu Dec 23rd, 2004	778.35 MB	608.64 MB	n/a ▲	17.47
Fri Dec 24th, 2004	393.69 MB	559.87 MB	n/a ▼	8.84
Sat Dec 25th, 2004	375.50 MB	693.31 MB	n/a ▼	8.43

Summary:

The total amount of bandwidth transferred during the selected week is **4.35 GB**.

The average amount of bandwidth transferred during a week is **1.12 GB**.

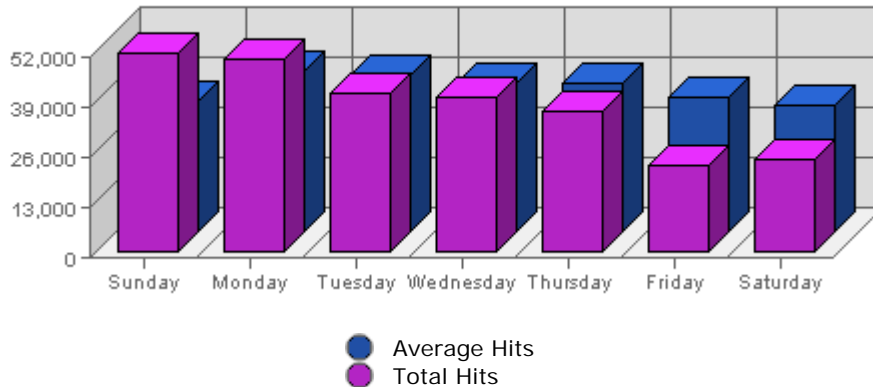
The smallest amount of bandwidth transferred occurred on **Sat, Dec 25th 2004** with **375.50 MB** transferred.

The largest amount of bandwidth transferred occurred on **Sun, Dec 19th 2004** with **1018.50 MB** transferred.

On average the smallest amount of bandwidth transferred occurs on **Friday** with **238.62 MB** transferred.

On average the largest amount of bandwidth transferred occurs on **Saturday** with **303.09 MB** transferred.

Hits



Date	Hits	Average	Forecast	% of Total
Sun Dec 19th, 2004	51,708	33,937.71	n/a ▼	19.35
Mon Dec 20th, 2004	50,323	42,049.47	n/a ▼	18.83
Tue Dec 21st, 2004	41,428	40,631.95	n/a ▼	15.51
Wed Dec 22nd, 2004	40,524	38,793.83	n/a ▼	15.17
Thu Dec 23rd, 2004	36,416	38,931.62	n/a ▼	13.63
Fri Dec 24th, 2004	22,842	34,871.48	n/a ▼	8.55
Sat Dec 25th, 2004	23,942	33,225.60	n/a ▼	8.96

Summary:

The total number of hits during the selected week is **267,183**.

The average number of hits during a week is **160,177.45**.

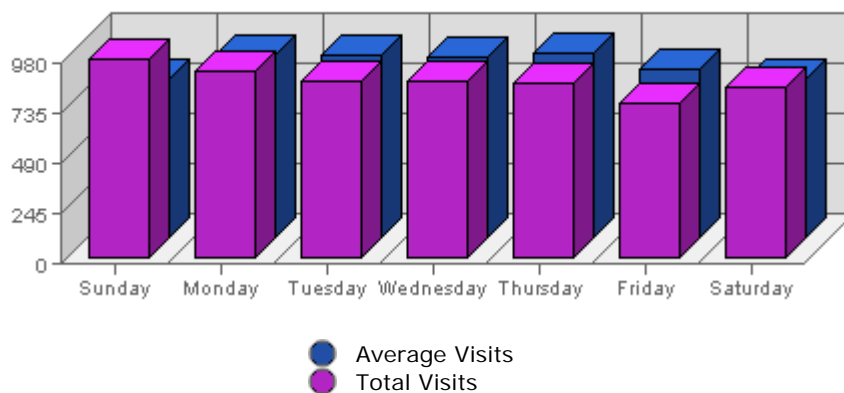
The smallest number of hits occurred on **Fri, Dec 24th 2004** with **22,842** hits.

The largest number of hits occurred on **Sun, Dec 19th 2004** with **51,708** hits.

On average the smallest number of hits occurs on **Saturday** with **33,078.24** hits.

On average the largest number of hits occurs on **Monday** with **42,180.79** hits.

Visits



Date	Visits	Average	Forecast	% of Total
Sun Dec 19th, 2004	976	778.61	n/a ▼	16.07
Mon Dec 20th, 2004	916	897.89	n/a ▼	15.08
Tue Dec 21st, 2004	868	895.25	n/a ▼	14.29
Wed Dec 22nd, 2004	864	886.66	n/a ▲	14.22
Thu Dec 23rd, 2004	857	902.11	n/a ▼	14.11
Fri Dec 24th, 2004	756	829.83	n/a ▼	12.44
Sat Dec 25th, 2004	838	782.42	n/a ▲	13.79

Summary:

The total number of visits during the selected week is **6,075**.

The average number of visits during a week is **3,646.04**.

The smallest number of visits occurred on **Fri, Dec 24th 2004** with **756** visits.

The largest number of visits occurred on **Sun, Dec 19th 2004** with **976** visits.

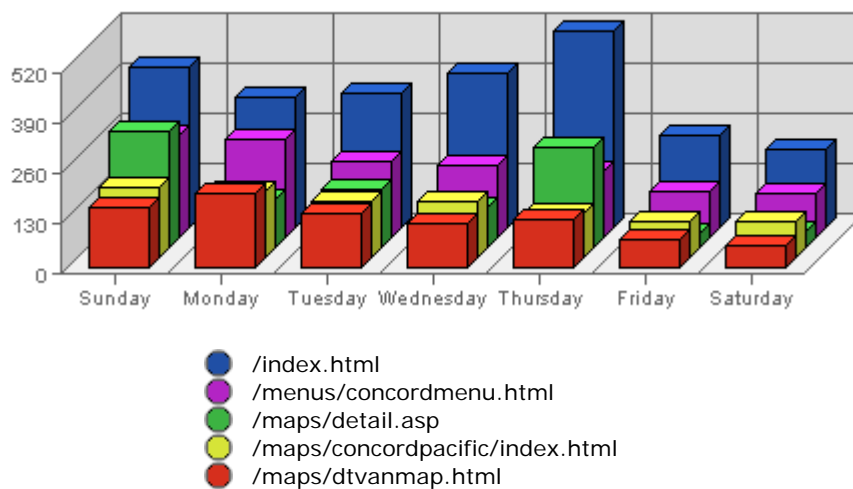
On average the smallest number of visits occurs on **Sunday** with **772.14** visits.

On average the largest number of visits occurs on **Thursday** with **901.41** visits.

Most Common Downloads

No Data Available for selected period

Most Common Page Views



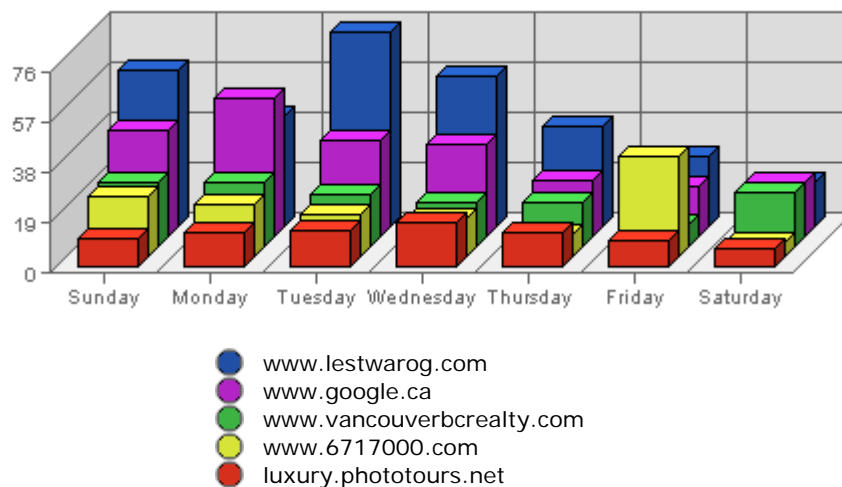
URL	Hits	Average	Forecasted	% of Total
1. /index.html	2,472	1,327.38	n/a ▼	6.82%
2. /menus/concordmenu.html	1,329	842.38	n/a ▼	3.67%

3.	/maps/detail.asp	1,043	146.85	n/a	▼	2.88%
4.	/maps/concordpacific/index.html	962	681.10	n/a	▼	2.66%
5.	/maps/dtvanmap.html	871	576.06	n/a	▼	2.40%
6.	/frames/dtvanmapframe.html	865	569.71	n/a	▼	2.39%
7.	/frames/concordframe.html	746	501.11	n/a	▼	2.06%
8.	/maps/coalharbour/index.html	441	371.79	n/a	▼	1.22%
9.	/menus/coalmenu.html	359	268.16	n/a	▼	0.99%
10.	/frames/coalframe.html	355	270.01	n/a	▼	0.98%

Summary:

- During the selected week, **4,228** distinct pages are responsible for **36,231** page views. (Averaging **8.57** views per page)
- During the previous week, **9,074** distinct pages were responsible for **55,185** page views. (Averaging **6.08** views per page)
- During the selected week there are **4,228** distinct pages. During the previous week there were **9,074** distinct pages. This is a change of **-4,846 (-53.41%)** distinct pages.
- During the selected week there are **36,231** page views. During the previous week there were **55,185** page views. This is a change of **-18,954 (-34.35%)** page views.
- The selected week's average (**8.57** views per page) is **up** by **2.49 (+40.95%)** from last week's average (**6.08** views per page).
- **17.81%** of all pages were viewed more than the average (**8.57** views per page), and **82.19%** were viewed less.
- Your top page accounts for **2,472** page views, **6.82%** of all page views.
- **1,459** pages (**34.51%** of all pages) recorded only 1 page view.

Most Common Referring Sites



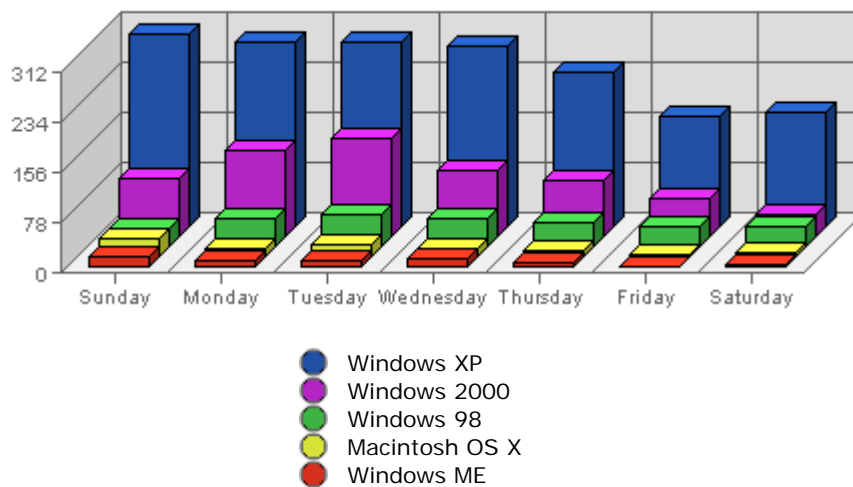
	Referring Site	Referrals	Average	Forecasted	% of Total
1.	www.lestwarog.com	315	140.92	n/a	▼ 20.72%
2.	www.google.ca	228	68.88	n/a	▼ 15.00%

3.	www.vancouverbcrealty.com	134	75.06	n/a ▼	8.82%
4.	www.6717000.com	127	69.27	n/a ▼	8.36%
5.	luxury.phototours.net	85	19.54	n/a ▼	5.59%
6.	www.google.com	70	29.47	n/a ▼	4.61%
7.	search.yahoo.com	41	32.22	n/a ▼	2.70%
8.	ca.search.yahoo.com	34	15.38	n/a ▲	2.24%
9.	images.search.yahoo.com	32	5.58	n/a ▼	2.11%
10.	homes.canada.com	30	4.51	n/a ▲	1.97%

Summary:

- During the selected week, **129** distinct referrers are responsible for **1,520** visits. (Averaging **11.78** visits per referrer)
- During the previous week, **145** distinct referrers were responsible for **2,367** visits. (Averaging **16.32** visits per referrer)
- During the selected week there are **129** distinct referrers. During the previous week there were **145** distinct referrers. This is a change of **-16 (-11.03%)** distinct referrers.
- During the selected week there are **1,520** referred visits. During the previous week there were **2,367** referred visits. This is a change of **-847 (-35.78%)** visits.
- The selected week's average (**11.78** visits per referring site) is **down** by **4.54 (-27.82%)** from last week's average (**16.32** visits per referring site).
- **14.73%** of all referrers provided more visits than the average (**11.78** visits per referrer), and **85.27%** provided less.
- Your top referrer accounts for **315** referred visits, **20.72%** of all referred visits.
- **64** referrers (**49.61%** of all referrers) referred only 1 visit.

Most Common Browser Operating Systems



	Operating System	Visits	Average	Forecasted	% of Total
1.	Windows XP	1,755	1,407.39	n/a ▼	57.30%
2.	Windows 2000	672	432.45	n/a ▼	21.94%

3.	Windows 98	273	341.45	n/a ▼	8.91%
4.	Macintosh OS X	106	48.22	n/a ▼	3.46%
5.	Windows ME	68	118.03	n/a ▼	2.22%
6.	Macintosh PPC	67	49.59	n/a ▼	2.19%
7.	Linux	50	42.93	n/a ▼	1.63%
8.	Windows 95	25	23.73	n/a ▲	0.82%
9.	Windows 2003	23	5.71	n/a ▲	0.75%
10.	Windows NT	20	38.20	n/a ▼	0.65%

Summary:

- During the selected week, **14** distinct browser operating systems are seen in **3,063** visits. (Averaging **218.79** visits per browser operating system)
- During the previous week, **14** distinct browser operating systems were seen in **4,604** visits. (Averaging **328.86** visits per browser operating system)
- During the selected week there are visits from **14** distinct browser operating systems. During the previous week there were visits from **14** distinct browser operating systems. This is a change of **(0.00%)** distinct browser operating systems.
- During the selected week there are **3,063** visits with identifiable browser operating systems. During the previous week there were **4,604** visits with identifiable browser operating systems. This is a change of **-1,541 (-33.47%)** visits.
- The selected week's average (**218.79** visits per browser operating system) is **down** by **110.07 (-33.47%)** from last week's average (**328.86** visits per browser operating system).
- **21.43%** of all browser operating systems are present in more than the average (**218.79** visits per browser operating system), and **78.57%** are present in less.
- Your top browser operating system accounts for **1,755** visits, **57.30%** of all visits.
- **4** browser operating systems (**28.57%** of all browser operating systems) recorded only 1 visit.