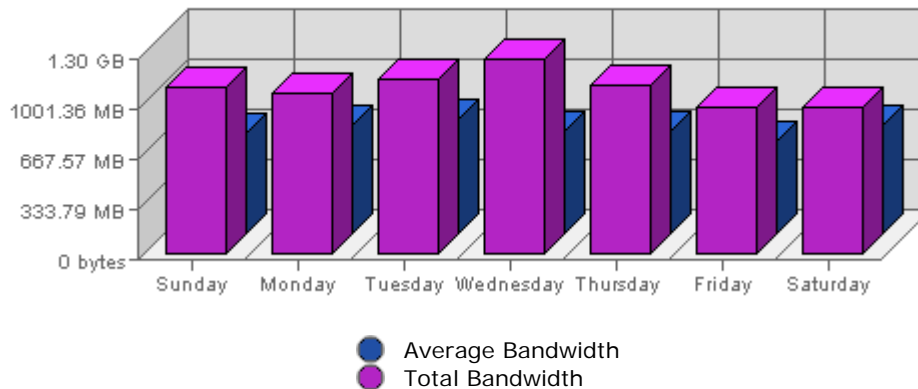


Executive Report
 For the week of February 20th 2005
 For virtual server **LesTwarog**

Bandwidth



Date	Bandwidth	Average	Forecast	% of Total
Sun Feb 20th, 2005	1.09 GB	667.81 MB	n/a ▲	14.35
Mon Feb 21st, 2005	1.05 GB	734.07 MB	n/a ▲	13.92
Tue Feb 22nd, 2005	1.14 GB	767.98 MB	n/a ▲	15.11
Wed Feb 23rd, 2005	1.27 GB	685.05 MB	n/a ▲	16.78
Thu Feb 24th, 2005	1.11 GB	690.05 MB	n/a ▲	14.62
Fri Feb 25th, 2005	977.99 MB	623.67 MB	n/a ▲	12.62
Sat Feb 26th, 2005	976.13 MB	727.60 MB	n/a ▼	12.60

Summary:

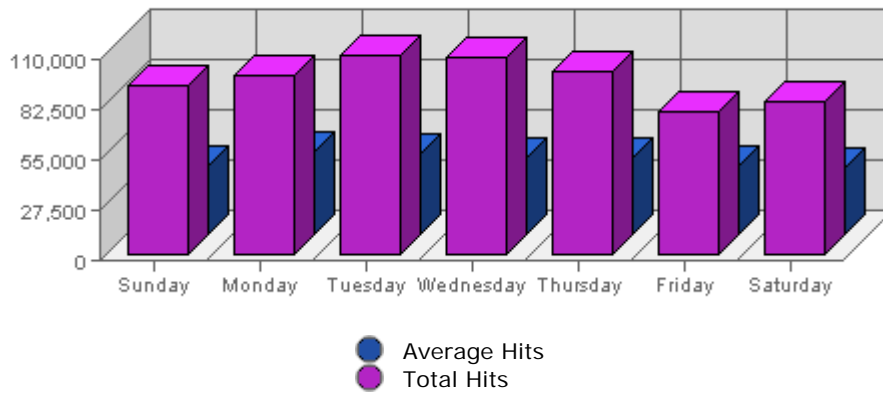
The total amount of bandwidth transferred during the selected week is **7.57 GB**.
 The average amount of bandwidth transferred during a week is **1.52 GB**.

The smallest amount of bandwidth transferred occurred on **Sat, Feb 26th 2005** with **976.13 MB** transferred.

The largest amount of bandwidth transferred occurred on **Wed, Feb 23rd 2005** with **1.27 GB** transferred.

On average the smallest amount of bandwidth transferred occurs on **Friday** with **316.63 MB** transferred.
 On average the largest amount of bandwidth transferred occurs on **Tuesday** with **394.76 MB** transferred.

Hits



Date	Hits	Average	Forecast	% of Total
Sun Feb 20th, 2005	93,277	38,022.04	n/a ▲	13.85
Mon Feb 21st, 2005	98,649	46,000.68	n/a ▲	14.65
Tue Feb 22nd, 2005	109,418	44,081.46	n/a ▲	16.25
Wed Feb 23rd, 2005	108,586	41,841.68	n/a ▲	16.13
Thu Feb 24th, 2005	100,739	42,187.71	n/a ▲	14.96
Fri Feb 25th, 2005	79,075	38,091.89	n/a ▲	11.74
Sat Feb 26th, 2005	83,606	36,517.10	n/a ▲	12.42

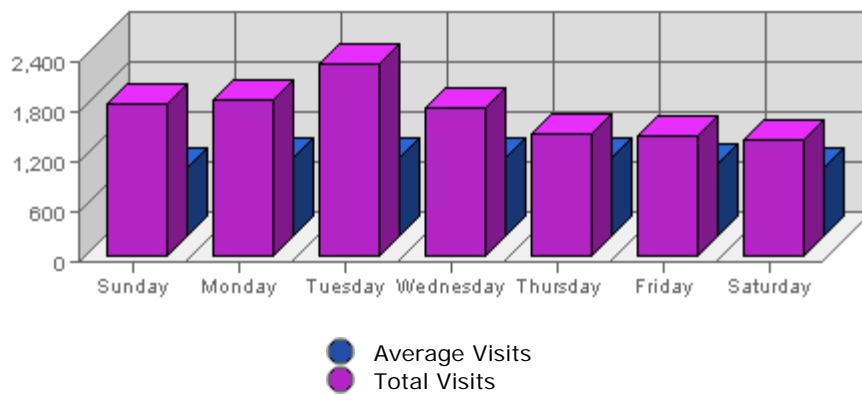
Summary:

The total number of hits during the selected week is **673,350**.
The average number of hits during a week is **183,971.95**.

The smallest number of hits occurred on **Fri, Feb 25th 2005** with **79,075** hits.
The largest number of hits occurred on **Tue, Feb 22nd 2005** with **109,418** hits.

On average the smallest number of hits occurs on **Saturday** with **37,171.11** hits.
On average the largest number of hits occurs on **Monday** with **46,731.90** hits.

Visits



Date	Visits	Average	Forecast	% of Total
Sun Feb 20th, 2005	1,830	830.01	n/a ▼	15.04
Mon Feb 21st, 2005	1,888	951.73	n/a ▼	15.52
Tue Feb 22nd, 2005	2,322	944.96	n/a ▲	19.09
Wed Feb 23rd, 2005	1,782	936.22	n/a ▲	14.65
Thu Feb 24th, 2005	1,478	949.93	n/a ▼	12.15
Fri Feb 25th, 2005	1,451	875.33	n/a ■	11.93
Sat Feb 26th, 2005	1,415	831.82	n/a ▼	11.63

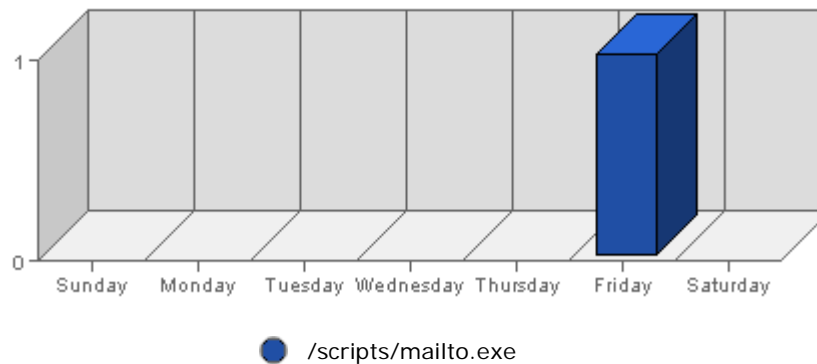
Summary:

The total number of visits during the selected week is **12,166**.
The average number of visits during a week is **4,055.70**.

The smallest number of visits occurred on **Sat, Feb 26th 2005** with **1,415** visits.
The largest number of visits occurred on **Tue, Feb 22nd 2005** with **2,322** visits.

On average the smallest number of visits occurs on **Saturday** with **839.92** visits.
On average the largest number of visits occurs on **Monday** with **964.74** visits.

Most Common Downloads



URL	Downloads	Average	Forecasted	% of Total
1. /scripts/mailto.exe	1	0.27	n/a ■	100.00%

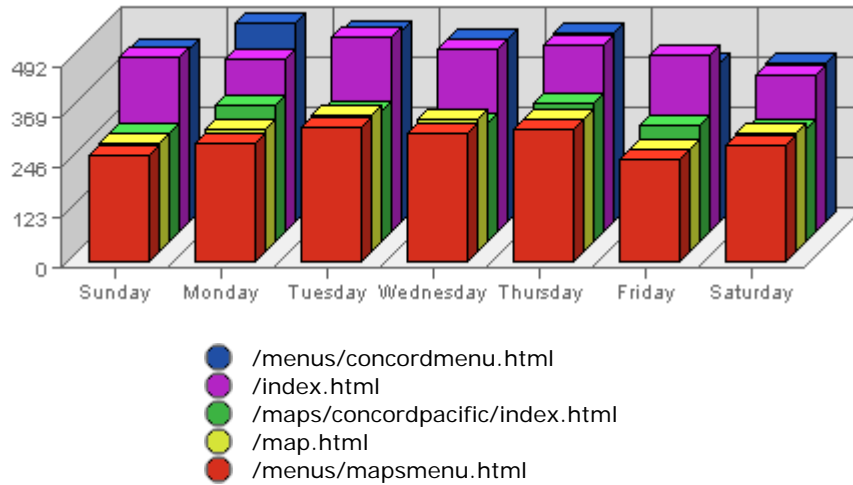
Summary:

- During the selected week, **1** distinct file is responsible for **1** download.
(Averaging **1.00** download per file)
- During the previous week, **0** distinct files were responsible for **0** downloads.
(Averaging **n/a** downloads per file)
- During the selected week there is **1** distinct file.
During the previous week there were **0** distinct files.
This is a change of **1 (0.00%)** distinct file.
- The selected week's average (**1.00** download per download) is **up** by (**%**) from last week's average (**n/a** downloads per download).
- **100.00%** of all files were downloaded more than the average (**1.00** download per file), and **0.00%**

were downloaded less.

- Your top file accounts for download, **100.00%** of all downloads.
- **1** file (**100.00%** of all files) recorded only 1 download.

Most Common Page Views



URL	Hits	Average	Forecasted	% of Total
1. /menus/concordmenu.html	3,083	963.93	n/a ▲	4.30%
2. /index.html	3,074	1,445.05	n/a ▼	4.29%
3. /maps/concordpacific/index.html	2,132	756.34	n/a ▲	2.97%
4. /map.html	2,110	219.89	n/a ▲	2.94%
5. /menus/mapsmenu.html	2,075	207.18	n/a ▲	2.89%
6. /frames/mapsframe.html	2,063	208.74	n/a ▲	2.88%
7. /frames/concordframe.html	1,980	575.43	n/a ▲	2.76%
8. /maps/coalharbour/index.html	1,100	401.60	n/a ▲	1.53%
9. /maps/detail.asp	1,072	223.36	n/a ▼	1.50%
10. /menus/coalmenu.html	993	297.65	n/a ▲	1.38%

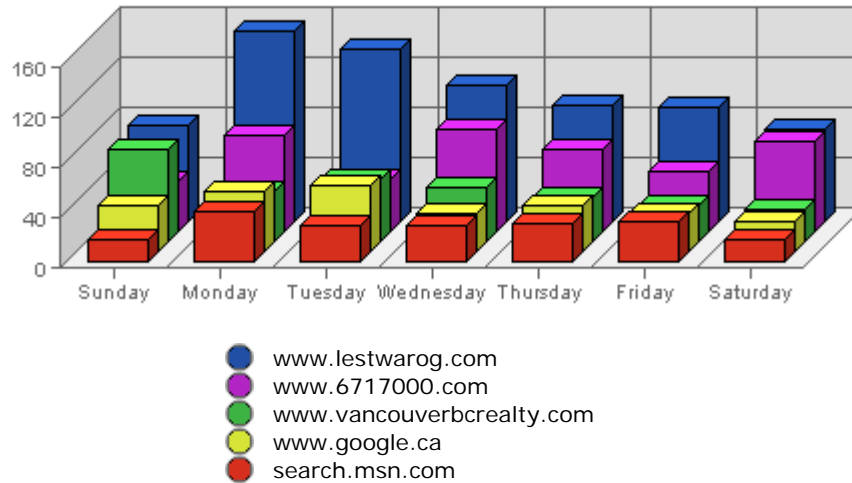
Summary:

- During the selected week, **4,925** distinct pages are responsible for **71,705** page views. (Averaging **14.56** views per page)
- During the previous week, **5,050** distinct pages were responsible for **66,407** page views. (Averaging **13.15** views per page)
- During the selected week there are **4,925** distinct pages. During the previous week there were **5,050** distinct pages. This is a change of **-125 (-2.48%)** distinct pages.
- During the selected week there are **71,705** page views. During the previous week there were **66,407** page views. This is a change of **5,298 (+7.98%)** page views.
- The selected week's average (**14.56** views per page) is **up** by **1.41 (+10.72%)** from last week's average (**13.15** views per page).
- **15.59%** of all pages were viewed more than the average (**14.56** views per page), and **84.41%** were

viewed less.

- Your top page accounts for **3,083** page views, **4.30%** of all page views.
- **1,687** pages (**34.25%** of all pages) recorded only 1 page view.

Most Common Referring Sites



	Referring Site	Referrals	Average	Forecasted	% of Total
1.	www.lestwarog.com	737	182.04	n/a ▲	24.57%
2.	www.6717000.com	428	88.19	n/a ▲	14.27%
3.	www.vancouverbcrealty.com	303	91.73	n/a ▲	10.10%
4.	www.google.ca	263	87.35	n/a ▲	8.77%
5.	search.msn.com	202	28.98	n/a ▲	6.74%
6.	www.google.com	129	35.83	n/a ▲	4.30%
7.	search.yahoo.com	105	36.23	n/a ▲	3.50%
8.	search.sympatico.msn.ca	60	13.92	n/a ▼	2.00%
9.	ca.search.yahoo.com	56	17.85	n/a ▲	1.87%
10.	images.search.yahoo.com	54	8.29	n/a ▲	1.80%

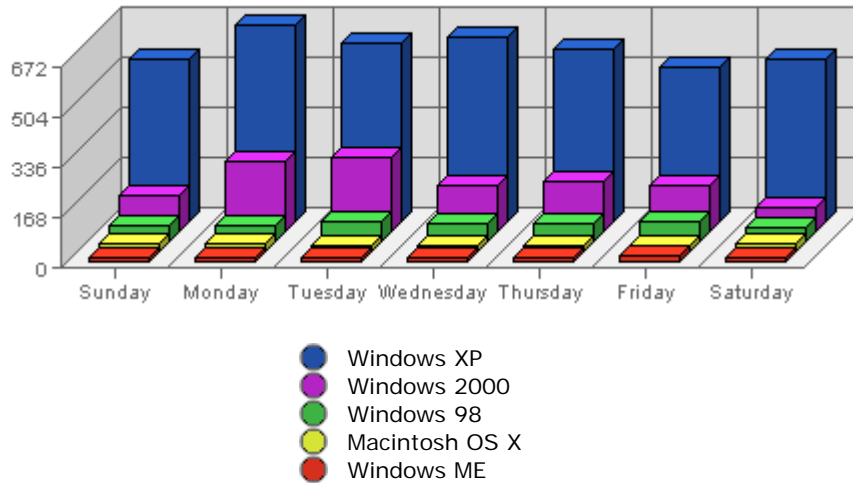
Summary:

- During the selected week, **176** distinct referrers are responsible for **2,999** visits. (Averaging **17.04** visits per referrer)
- During the previous week, **158** distinct referrers were responsible for **2,809** visits. (Averaging **17.78** visits per referrer)
- During the selected week there are **176** distinct referrers. During the previous week there were **158** distinct referrers. This is a change of **18 (+11.39%)** distinct referrers.
- During the selected week there are **2,999** referred visits. During the previous week there were **2,809** referred visits. This is a change of **190 (+6.76%)** visits.
- The selected week's average (**17.04** visits per referring site) is **down** by **0.74 (-4.16%)** from last week's average (**17.78** visits per referring site).
- **10.23%** of all referrers provided more visits than the average (**17.04** visits per referrer), and **89.77%**

provided less.

- Your top referrer accounts for **737** referred visits, **24.57%** of all referred visits.
- **88** referrers (**50.00%** of all referrers) referred only 1 visit.

Most Common Browser Operating Systems



	Operating System	Visits	Average	Forecasted	% of Total
1.	Windows XP	4,081	1,565.93	n/a ▲	64.54%
2.	Windows 2000	1,193	475.41	n/a ▲	18.87%
3.	Windows 98	430	345.72	n/a ▲	6.80%
4.	Macintosh OS X	191	59.96	n/a ▼	3.02%
5.	Windows ME	123	117.82	n/a ▲	1.95%
6.	Macintosh PPC	101	53.01	n/a ▼	1.60%
7.	Linux	64	43.85	n/a ▲	1.01%
8.	Windows NT	52	38.41	n/a ▲	0.82%
9.	Windows 95	43	26.26	n/a ▼	0.68%
10.	Windows 2003	43	8.48	n/a ▼	0.68%

Summary:

- During the selected week, **12** distinct browser operating systems are seen in **6,323** visits. (Averaging **526.92** visits per browser operating system)
- During the previous week, **12** distinct browser operating systems were seen in **5,823** visits. (Averaging **485.25** visits per browser operating system)
- During the selected week there are visits from **12** distinct browser operating systems. During the previous week there were visits from **12** distinct browser operating systems. This is a change of **(0.00%)** distinct browser operating systems.
- During the selected week there are **6,323** visits with identifiable browser operating systems. During the previous week there were **5,823** visits with identifiable browser operating systems. This is a change of **500 (+8.59%)** visits.
- The selected week's average (**526.92** visits per browser operating system) is **up** by **41.67 (+8.59%)** from last week's average (**485.25** visits per browser operating system).
- **16.67%** of all browser operating systems are present in more than the average (**526.92** visits per

browser operating system), and **83.33%** are present in less.

- Your top browser operating system accounts for **4,081** visits, **64.54%** of all visits.
- **2** browser operating systems (**16.67%** of all browser operating systems) recorded only 1 visit.