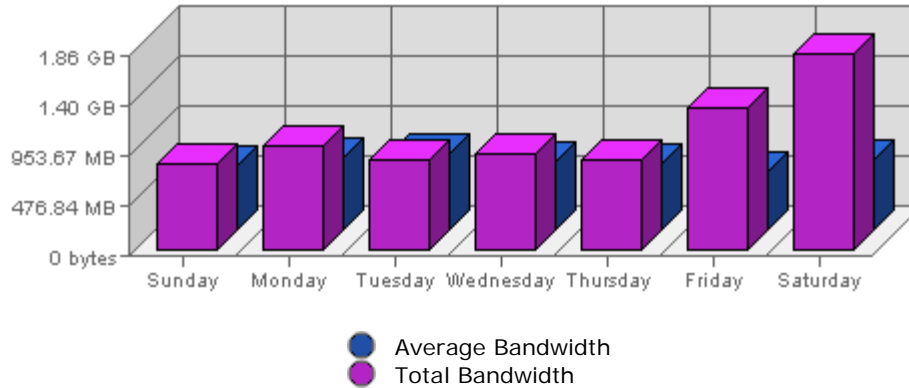


Executive Report
 For the week of January 23rd 2005
 For virtual server **LesTwarog**

Bandwidth



Date	Bandwidth	Average	Forecast	% of Total
Sun Jan 23rd, 2005	836.92 MB	616.14 MB	n/a ▲	10.80
Mon Jan 24th, 2005	1006.57 MB	688.93 MB	n/a ▼	12.99
Tue Jan 25th, 2005	866.92 MB	740.61 MB	n/a ▼	11.19
Wed Jan 26th, 2005	928.27 MB	655.42 MB	n/a ▼	11.98
Thu Jan 27th, 2005	871.21 MB	629.63 MB	n/a ▲	11.25
Fri Jan 28th, 2005	1.33 GB	570.87 MB	n/a ▲	17.51
Sat Jan 29th, 2005	1.84 GB	675.78 MB	n/a ▲	24.27

Summary:

The total amount of bandwidth transferred during the selected week is **7.57 GB**.

The average amount of bandwidth transferred during a week is **1.31 GB**.

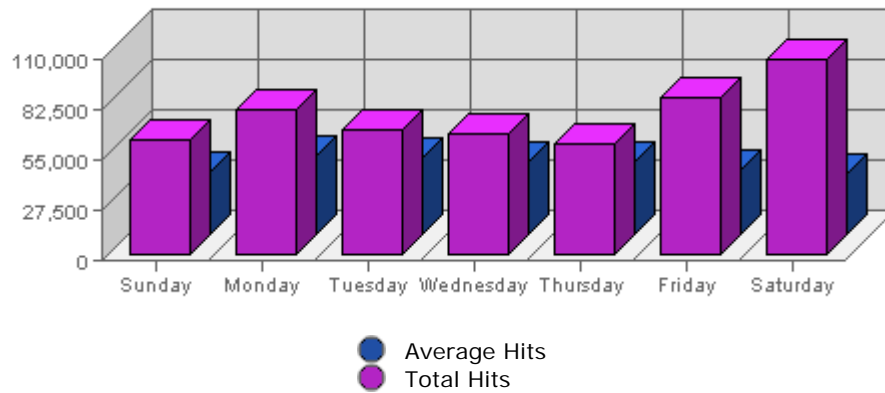
The smallest amount of bandwidth transferred occurred on **Sun, Jan 23rd 2005** with **836.92 MB** transferred.

The largest amount of bandwidth transferred occurred on **Sat, Jan 29th 2005** with **1.84 GB** transferred.

On average the smallest amount of bandwidth transferred occurs on **Friday** with **280.35 MB** transferred.

On average the largest amount of bandwidth transferred occurs on **Tuesday** with **356.03 MB** transferred.

Hits



Date	Hits	Average	Forecast	% of Total
Sun Jan 23rd, 2005	63,795	34,990.60	n/a ▲	11.96
Mon Jan 24th, 2005	80,278	43,183.46	n/a ▼	15.05
Tue Jan 25th, 2005	68,595	42,207.93	n/a ▼	12.86
Wed Jan 26th, 2005	66,349	39,856.59	n/a ▼	12.44
Thu Jan 27th, 2005	61,079	40,045.18	n/a ▼	11.45
Fri Jan 28th, 2005	86,408	35,694.20	n/a ▲	16.20
Sat Jan 29th, 2005	107,011	33,994.24	n/a ▲	20.06

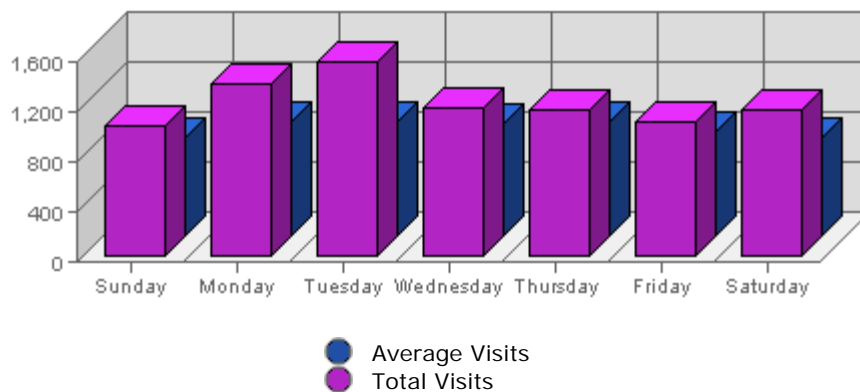
Summary:

The total number of hits during the selected week is **533,515**.
The average number of hits during a week is **169,643.44**.

The smallest number of hits occurred on **Thu, Jan 27th 2005** with **61,079** hits.
The largest number of hits occurred on **Sat, Jan 29th 2005** with **107,011** hits.

On average the smallest number of hits occurs on **Saturday** with **35,068.01** hits.
On average the largest number of hits occurs on **Monday** with **43,728.97** hits.

Visits



Date	Visits	Average	Forecast	% of Total
Sun Jan 23rd, 2005	1,049	795.45	n/a ▼	12.17
Mon Jan 24th, 2005	1,384	920.42	n/a ▼	16.06
Tue Jan 25th, 2005	1,567	919.46	n/a ▼	18.18
Wed Jan 26th, 2005	1,196	911.19	n/a ▼	13.88
Thu Jan 27th, 2005	1,181	921.01	n/a ▼	13.71
Fri Jan 28th, 2005	1,072	844.58	n/a ▼	12.44
Sat Jan 29th, 2005	1,168	793.31	n/a ▲	13.55

Summary:

The total number of visits during the selected week is **8,617**.
The average number of visits during a week is **3,837.18**.

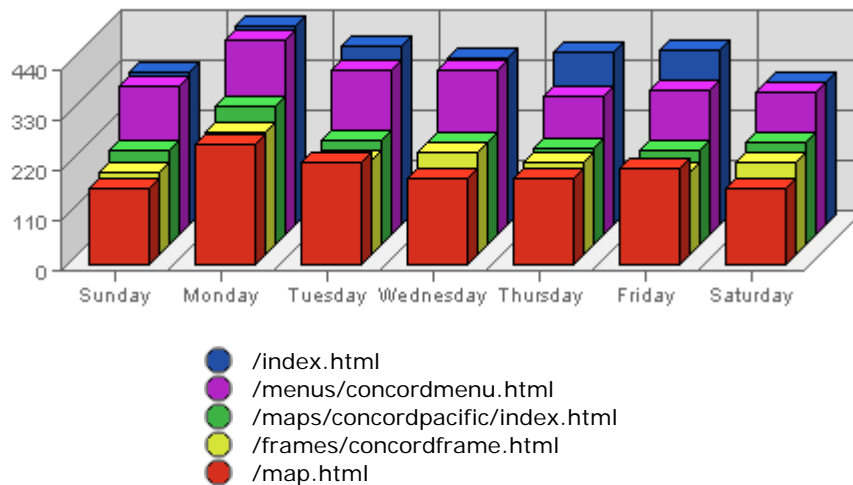
The smallest number of visits occurred on **Sun, Jan 23rd 2005** with **1,049** visits.
The largest number of visits occurred on **Tue, Jan 25th 2005** with **1,567** visits.

On average the smallest number of visits occurs on **Sunday** with **789.97** visits.
On average the largest number of visits occurs on **Tuesday** with **928.84** visits.

Most Common Downloads

No Data Available for selected period

Most Common Page Views



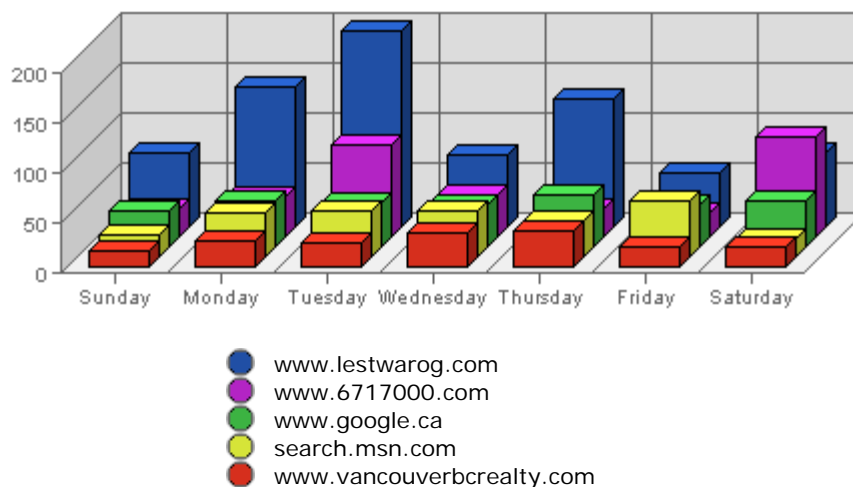
	URL	Hits	Average	Forecasted	% of Total
1.	/index.html	2,617	1,378.12	n/a ▼	3.50%
2.	/menus/concordmenu.html	2,421	895.42	n/a ▼	3.24%
3.	/maps/concordpacific/index.html	1,618	715.04	n/a ▼	2.16%
4.	/frames/concordframe.html	1,482	532.42	n/a ▲	1.98%

5.	/map.html	1,424	160.42	n/a ▼	1.90%
6.	/menus/mapsmenu.html	1,404	148.94	n/a ▲	1.88%
7.	/frames/mapsframe.html	1,386	151.10	n/a ▲	1.85%
8.	/maps/detail.asp	1,285	182.58	n/a ▼	1.72%
9.	/maps/coalharbour/index.html	701	383.38	n/a ■	0.94%
10.	/menus/coalmenu.html	626	279.23	n/a ▼	0.84%

Summary:

- During the selected week, **7,885** distinct pages are responsible for **74,834** page views. (Averaging **9.49** views per page)
- During the previous week, **8,468** distinct pages were responsible for **66,717** page views. (Averaging **7.88** views per page)
- During the selected week there are **7,885** distinct pages. During the previous week there were **8,468** distinct pages. This is a change of **-583 (-6.88%)** distinct pages.
- During the selected week there are **74,834** page views. During the previous week there were **66,717** page views. This is a change of **8,117 (+12.17%)** page views.
- The selected week's average (**9.49** views per page) is **up** by **1.61 (+20.43%)** from last week's average (**7.88** views per page).
- **15.87%** of all pages were viewed more than the average (**9.49** views per page), and **84.13%** were viewed less.
- Your top page accounts for **2,617** page views, **3.50%** of all page views.
- **2,734** pages (**34.67%** of all pages) recorded only 1 page view.

Most Common Referring Sites



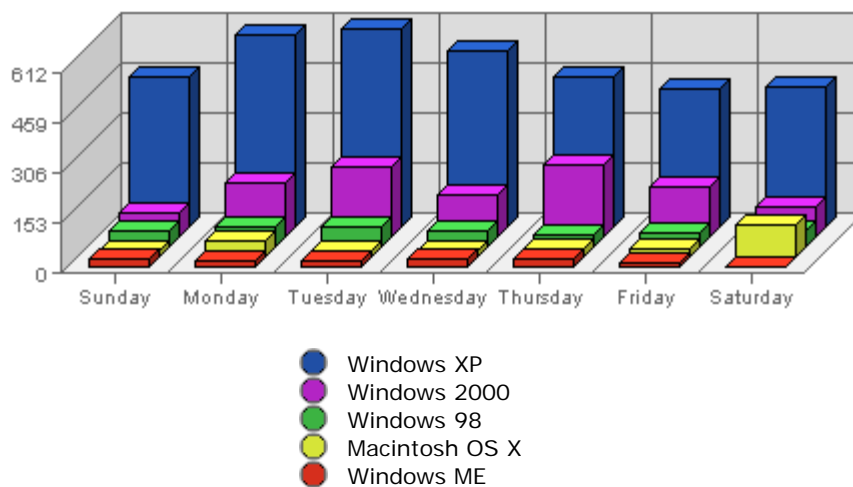
Referring Site	Referrals	Average	Forecasted	% of Total
1. www.lestwarog.com	740	164.80	n/a ▼	24.88%
2. www.6717000.com	359	78.26	n/a ▲	12.07%
3. www.google.ca	311	79.87	n/a ▼	10.46%
4. search.msn.com	272	23.93	n/a ▲	9.15%

5.	www.vancouverbcrealty.com	181	83.72	n/a ▼	6.09%
6.	www.google.com	130	32.95	n/a ▲	4.37%
7.	luxury.phototours.net	129	24.28	n/a ▲	4.34%
8.	search.yahoo.com	92	34.08	n/a ▲	3.09%
9.	search.sympatico.msn.ca	86	11.74	n/a ▲	2.89%
10.	ca.search.yahoo.com	47	16.73	n/a ▼	1.58%

Summary:

- During the selected week, **158** distinct referrers are responsible for **2,974** visits. (Averaging **18.82** visits per referrer)
- During the previous week, **166** distinct referrers were responsible for **3,166** visits. (Averaging **19.07** visits per referrer)
- During the selected week there are **158** distinct referrers. During the previous week there were **166** distinct referrers. This is a change of **-8 (-4.82%)** distinct referrers.
- During the selected week there are **2,974** referred visits. During the previous week there were **3,166** referred visits. This is a change of **-192 (-6.06%)** visits.
- The selected week's average (**18.82** visits per referring site) is **down** by **0.25 (-1.31%)** from last week's average (**19.07** visits per referring site).
- **12.03%** of all referrers provided more visits than the average (**18.82** visits per referrer), and **87.97%** provided less.
- Your top referrer accounts for **740** referred visits, **24.88%** of all referred visits.
- **72** referrers (**45.57%** of all referrers) referred only 1 visit.

Most Common Browser Operating Systems



	Operating System	Visits	Average	Forecasted	% of Total
1.	Windows XP	3,516	1,484.75	n/a ▲	62.07%
2.	Windows 2000	1,063	455.44	n/a ▼	18.76%
3.	Windows 98	362	343.49	n/a ▼	6.39%
4.	Macintosh OS X	273	54.89	n/a ▲	4.82%

5.	Windows ME	150	117.75	n/a ▲	2.65%
6.	Macintosh PPC	107	51.61	n/a ▲	1.89%
7.	Windows 95	61	25.49	n/a ▼	1.08%
8.	Linux	54	43.41	n/a ▲	0.95%
9.	Windows NT	43	38.30	n/a ▼	0.76%
10.	Windows 2003	31	6.82	n/a ▼	0.55%

Summary:

- During the selected week, **13** distinct browser operating systems are seen in **5,665** visits. (Averaging **435.77** visits per browser operating system)
- During the previous week, **12** distinct browser operating systems were seen in **5,755** visits. (Averaging **479.58** visits per browser operating system)
- During the selected week there are visits from **13** distinct browser operating systems. During the previous week there were visits from **12** distinct browser operating systems. This is a change of **1 (+8.33%)** distinct browser operating system.
- During the selected week there are **5,665** visits with identifiable browser operating systems. During the previous week there were **5,755** visits with identifiable browser operating systems. This is a change of **-90 (-1.56%)** visits.
- The selected week's average (**435.77** visits per browser operating system) is **down** by **43.81 (-9.14%)** from last week's average (**479.58** visits per browser operating system).
- **15.38%** of all browser operating systems are present in more than the average (**435.77** visits per browser operating system), and **84.62%** are present in less.
- Your top browser operating system accounts for **3,516** visits, **62.07%** of all visits.
- **1** browser operating system (**7.69%** of all browser operating systems) recorded only 1 visit.